

Depth (m)

Lithology

FaultZone

Alteration

Oxidation

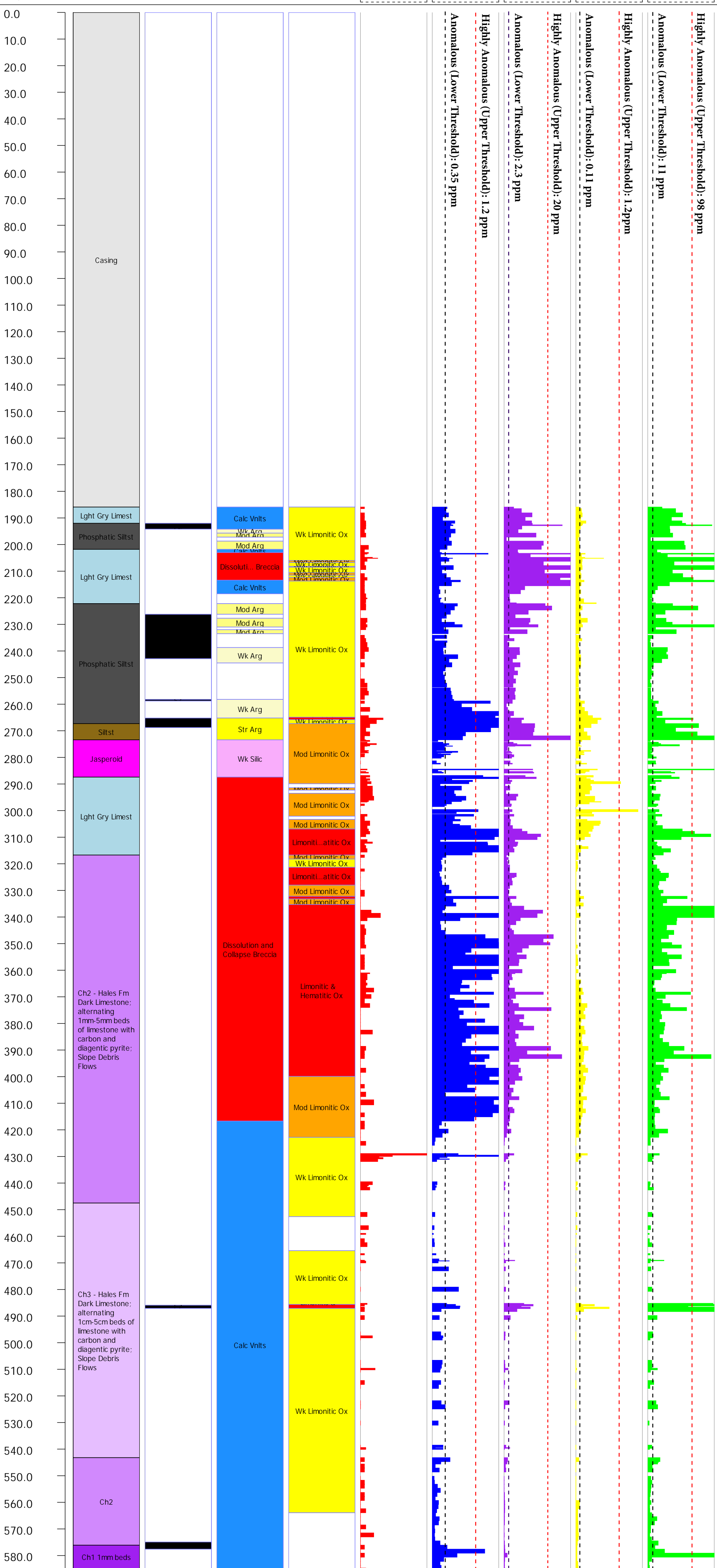
Au (ppb)

Tl (ppm)

Sb (ppm)

Hg (ppm)

As (ppm)



HOLE: SGVC002

186 metres (610 feet) ↓



HOLE: SGVC002

245 metres (803 feet) ↓



HOLE: SGVC002

307 metres (1,008 feet) ↓



HOLE: SGVC002

361 metres (1,183 feet) ↓



HOLE: SGVC002

411 metres (1,350 feet) ↓



HOLE: SGVC002

459 metres (1,506 feet) ↓



HOLE: SGVC002

506 metres (1,661 feet) ↓

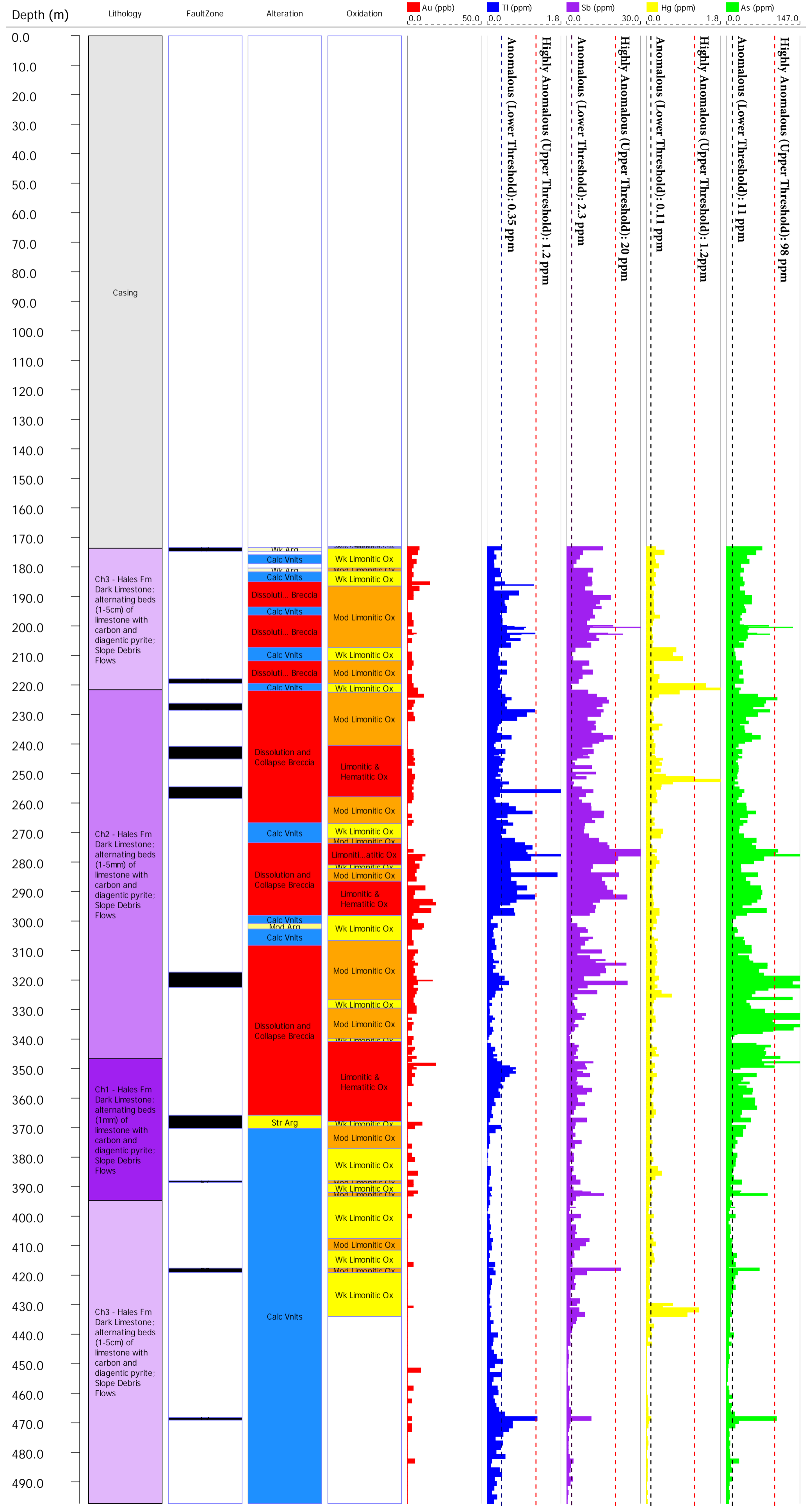




HOLE: SGVC002

552 metres (1,812 feet) ↓





HOLE: SGVC003

173 metres (568 feet) ↓





**HOLE: SGVC003**

279 metres (914 feet) ↓



HOLE: SGVC003

333 metres (1,094 feet) ↓





HOLE: SGVC003

437 metres (1,433 feet) ↓





**HOLE: SGVC003**

483 metres (1,585 feet) ↓

