

A DIFFERENT APPROACH TO DISCOVERY

WWW.NEVADAEXPLORATION.COM

Awakening Project Update
03-03-14



 Nevada Exploration Inc

March 2, 2014

PIONEERING GROUNDWATER CHEMISTRY EXPLORATION IN NEVADA

General Cautionary Statement

Warning! The business of Gold Exploration can be FUN, but it can also be hazardous to your physical, emotional, spiritual and financial health!

This presentation contains certain "forward-looking statements" including, without limitation, expectations, beliefs, plans and objectives regarding the potential transactions and ventures discussed in this presentation. Among the important factors that could cause actual results to differ materially from those indicated by such forward-looking statements are the risks inherent in mineral exploration, the need to obtain additional financing, environmental permits, the availability of needed personnel and equipment for exploration and development, fluctuations in the price of minerals, and general economic conditions.

Nevada Exploration Inc., its subsidiaries or affiliated companies, disclaims all responsibility and accepts no liability (including negligence) for the consequences of any person acting, or not acting, on this information. This presentation is neither an offer nor the solicitation of an offer to sell or purchase any investment.

Thank You and Enjoy the Presentation!

The Management of Nevada Exploration Inc.

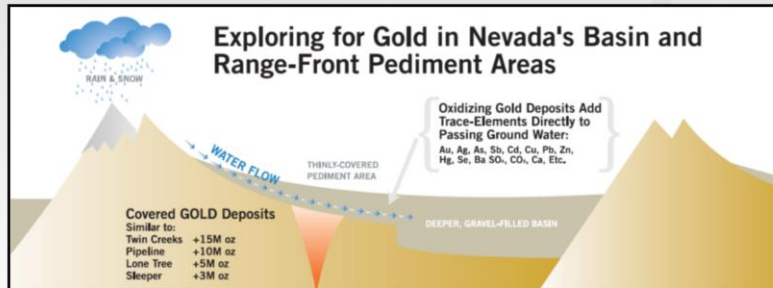
Specific Cautionary Statement

This presentation contains information about the Sleeper Gold Mine, which is an 'Adjacent Property' on which we have no right to explore or mine.

All investors are cautioned that mineral deposits on adjacent properties are not proof of mineral deposits on NGE properties. A mineral deposit has not yet been discovered on the Awakening Project. Our intention is to provide the investor with some parameters for the type of mineral deposit that NGE may encounter while conducting exploration on property that NGE does control.

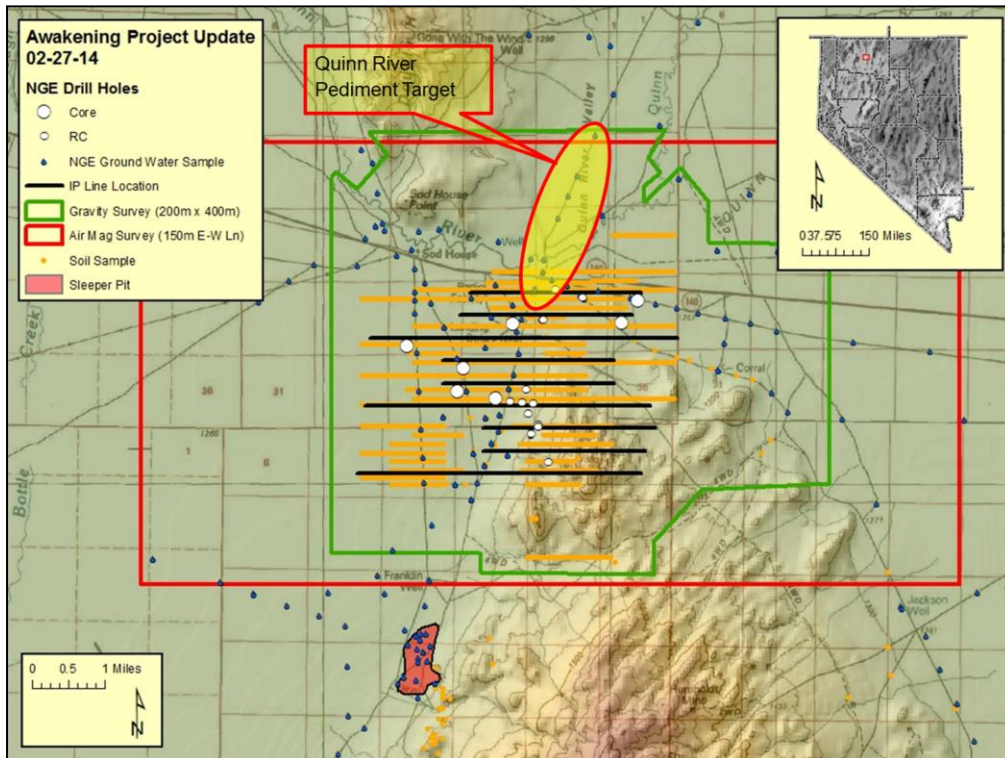
The outline of the Sleeper Mine Pit is useful as an approximation of the size of the potentially, gold-bearing Conceptual Hydrothermal System being sought. The pit outline can be thought of as a 'template' or 'foot print' representing the approximate area of hydrothermal alteration and anomalous rock chemistry associated with gold mineralization. Not all such areas are associated with economic gold mineralization. When they are associated with gold mineralization the areas of actual economic gold concentration are much, much smaller. Such areas of potentially mineralized bedrock could be located anywhere beneath the large expanse of sand and gravel within the Awakening Project Area or be entirely absent.

Water Chemistry – Looking Beneath the Cover



When groundwater flows near a concealed gold deposit it retains a chemical 'memory' or 'fingerprint' of such an encounter and creates a kind of unique water chemical 'scent'.

The concept being tested by NGE is that once identified, can the unusual water chemistry scent be followed to its bedrock source to effect the discovery a new gold mine ?



NGE's Awakening Project consists of 158 unpatented mining claims covering nearly five square miles due north of Paramount's Sleeper Project.

Since 2008, the Awakening project has benefited from the expenditure of more than \$2,000,000 by NGE and Northgate (now Aurico). The project area and the data set coverages are shown above and consist of:

14 Rotary drill Holes (Tt 6,290ft)

7 Core Holes (Tt 7,189ft)

Whole rock analyses (+100 drill samples);

Regional ground water sampling for gold plus 80 other trace elements using ultra low sensitivity analytical techniques;

IP/Resistivity survey (26 In-mi);

Gravity survey (200m x 400m grid);

Pre-pipeline air magnetic survey (150m E-W line spacing);

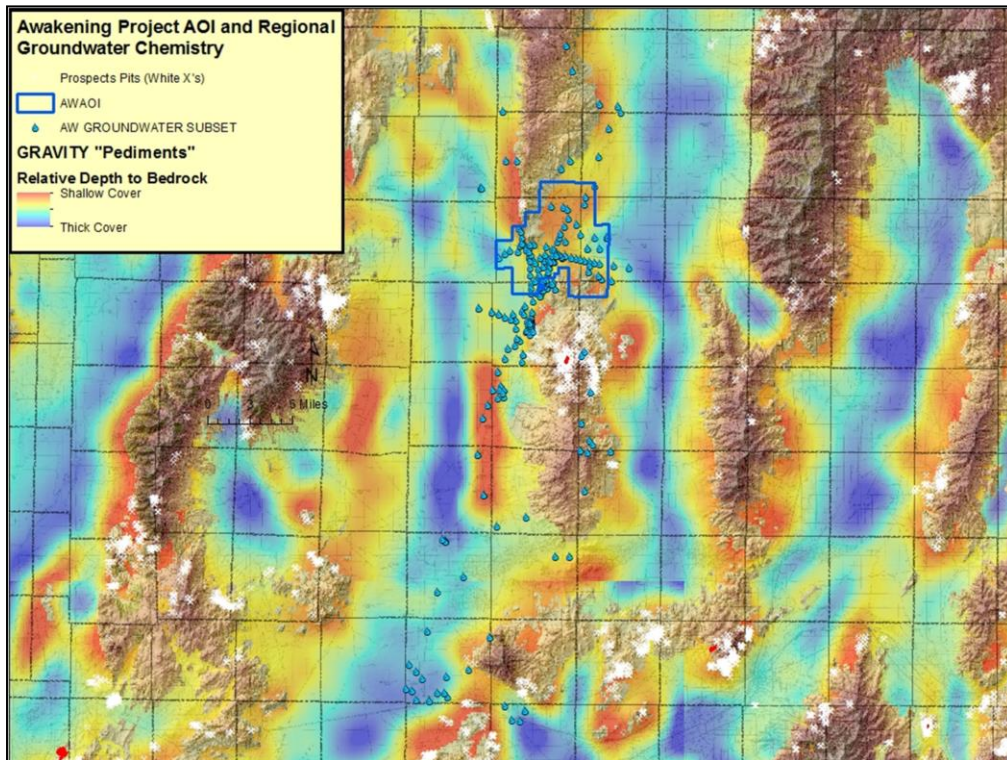
Soil sampling (1,830 samples @50m spacing along 24 lines);

The exploration work to date was directed at understanding the regional and structural context of the district and was initiated as part of an initial longer term

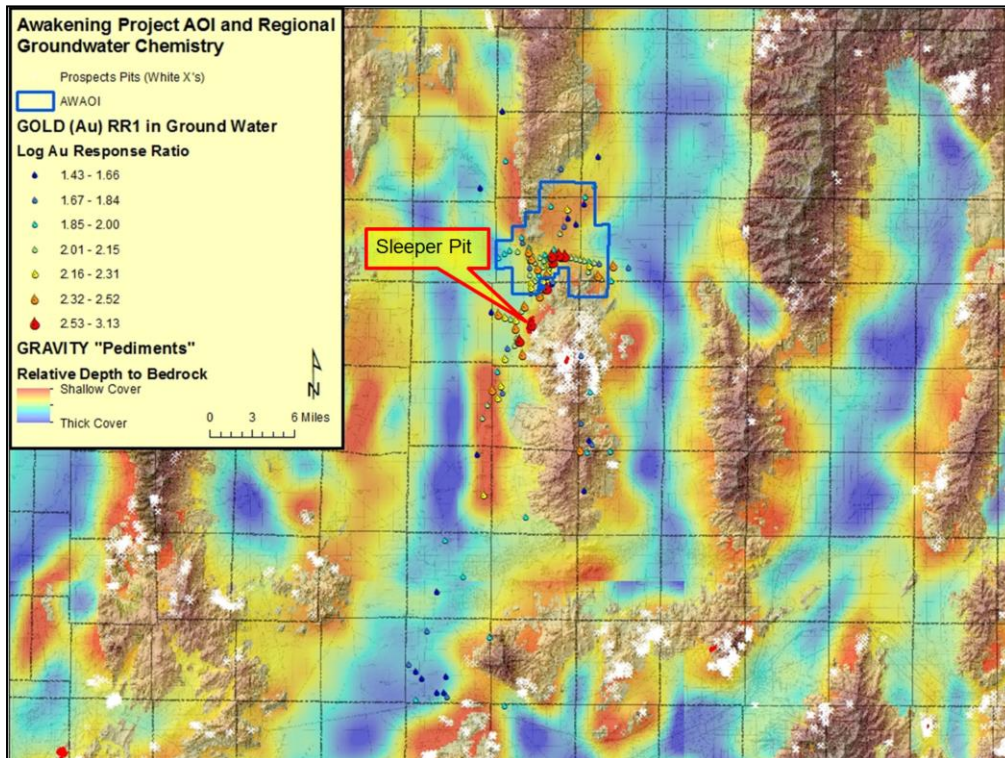
commitment by Northgate that was terminated when Aurico took over Northgate and the new management decided to change the strategic direction of the company.

Although NGE continues to review the data acquired by Northgate, a compelling target was immediately evident by a coincident gravity high, air magnetic low, and now, an anomalous groundwater chemistry signature located on an undrilled pediment above the projection of a complex structural setting projected from the Sleeper system located to the south.

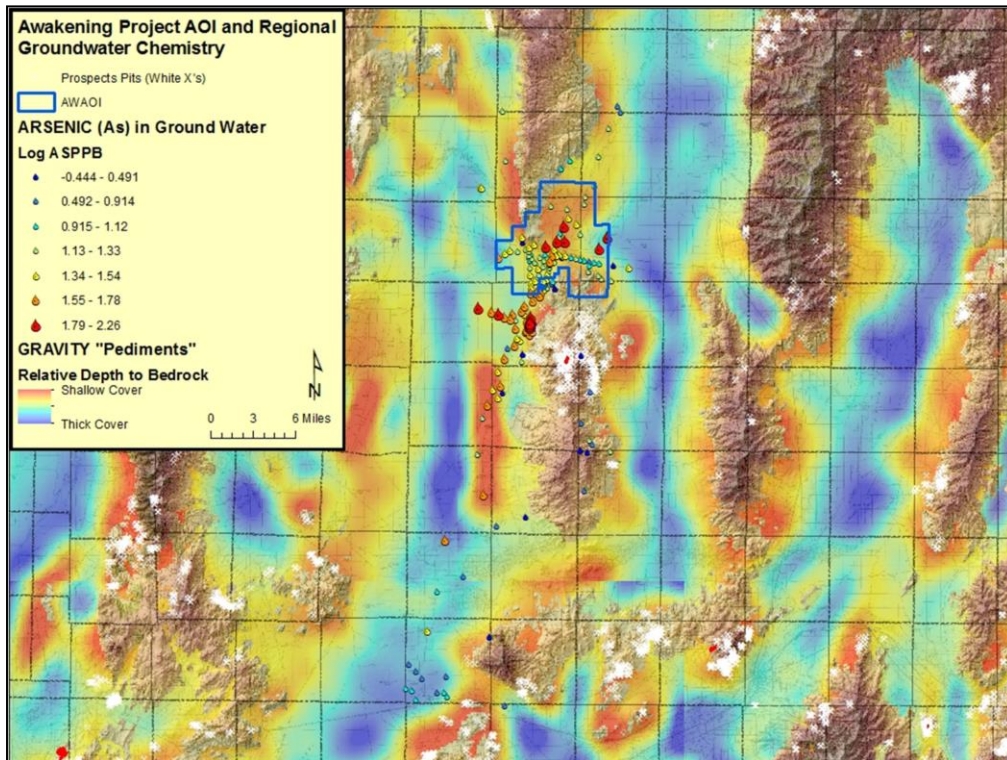
NGE believes further detailed review of the data will make a compelling case for one to three relatively short (<300m) RC and/or core holes to test the new Quinn River Pediment target for the presence of a covered, previously unexplored Sleeper-style hydrothermal system.



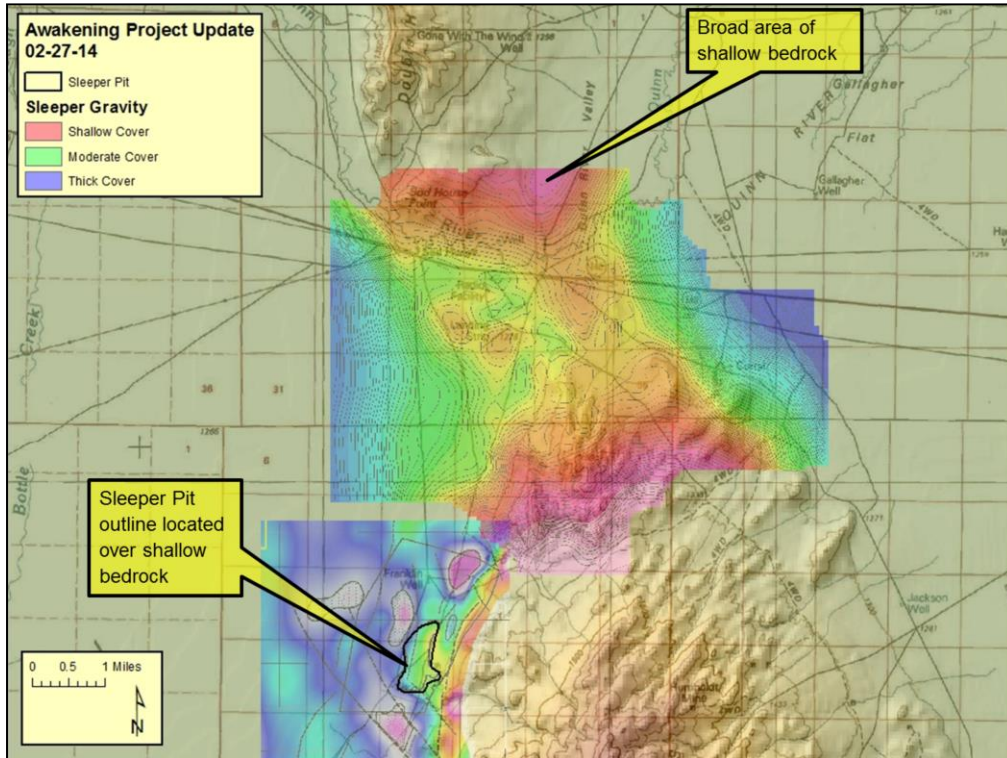
The Awakening Project was initially recognized by NGE through a regional reconnaissance program of ground water sampling using NGE's proprietary ground water sampling technology.



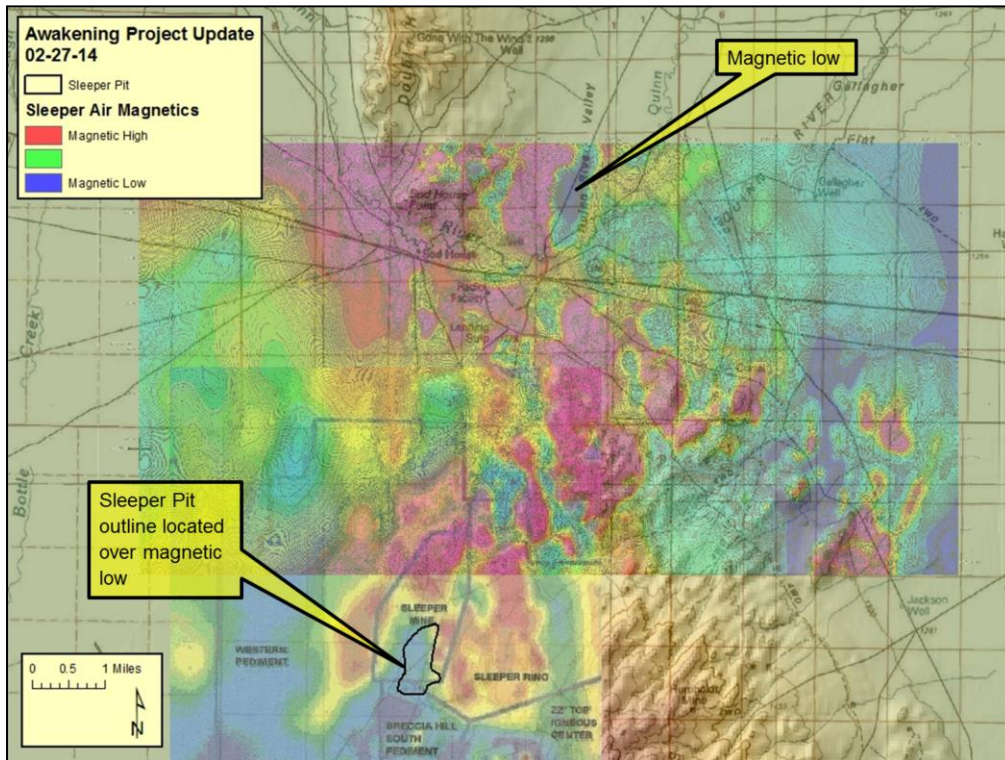
Groundwater sampling initially identified anomalous levels of gold in groundwater associated with the known Sleeper gold deposit and similar levels of gold from groundwater on the Awakening project area located immediately north of the Sleeper gold mine. The regional distribution of gold concentrations in groundwater also suggest the bedrock source area is relatively close to the areas of higher than normal gold concentrations. Regional gravity data suggested a large area of bedrock concealed by a relatively thin cover of sand & gravel that was coincident with the unusual concentrations of gold in groundwater.



The distributions of higher-than-normal Arsenic (As) and other trace element concentrations in groundwater support a further focusing of exploration interest.

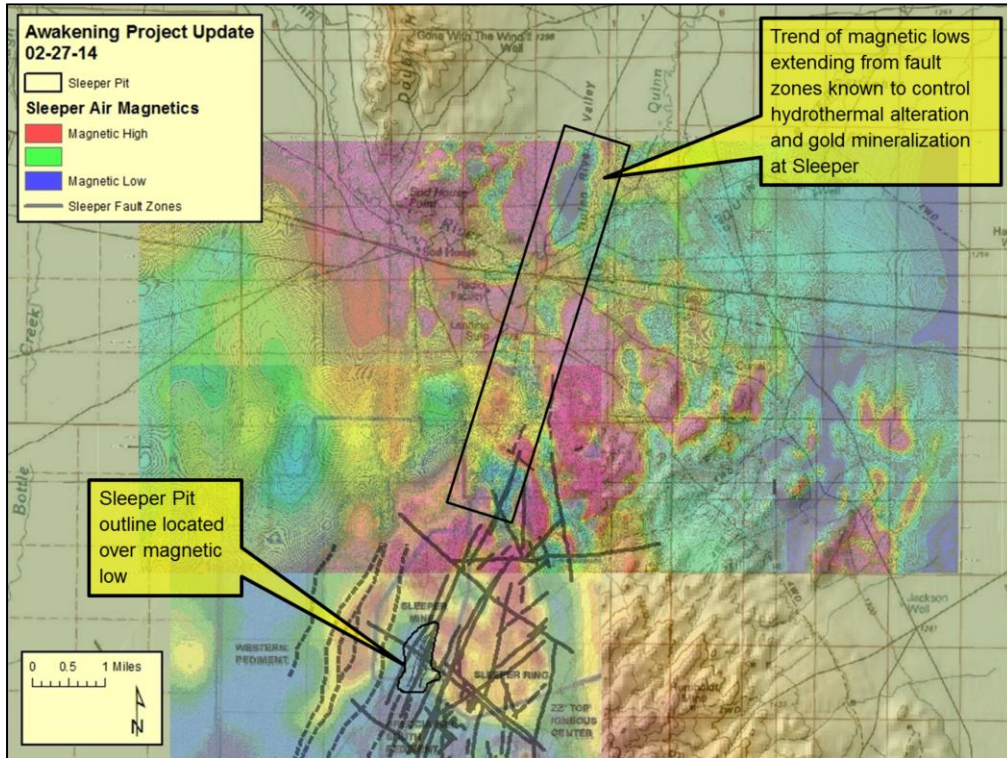


A gravity survey from the Paramount website over the Sleeper gold mine area shows the sand & gravel cover in the area of the pit to be relatively shallow. A separate gravity survey conducted by NGE to the north shows a broad area of shallow bedrock located on the northern edge of the Awakening project area.

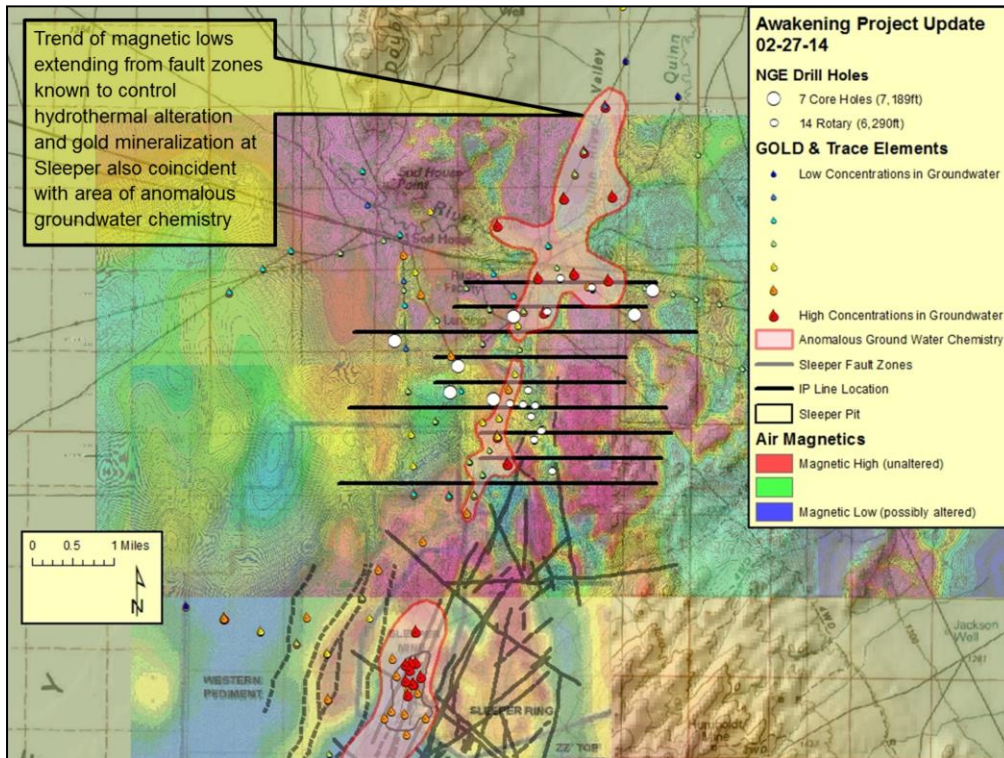


An air magnetic survey from the Paramount website over the Sleeper gold mine area shows a magnetic low coincident with the area of alteration at the Sleeper gold deposit. Hydrothermal alteration destroys magnetite contained in the unaltered volcanic host rock equivalents that host the Sleeper gold mineralization, so areas of low magnetic response might be associated with areas of potentially gold-bearing hydrothermal alteration.

However, magnetic lows might have other explanations not related gold mineralization. A magnetic low might simply be indicative of a more deeply buried magnetic high feature. So, it is important to process this information in conjunction with other features of exploration significance. But it is interesting that a separate air magnetic survey conducted by NGE to the north of the Sleeper mine area shows a pronounced magnetic low located on the northern edge of the Awakening project area coincident with the area of shallow bedrock shown on the previous slide.



Faults mapped within the area of the Sleeper gold deposit are coincident with various features of the air magnetic map that together define a structural fabric that can be used to further constrain areas of exploration interest.



NGE drilled several shallow (<300m) vertical rotary drill holes, encountered drilling problems and yielded enigmatic results. Northgate then drilled several deep (>300m) angle core holes. The combined drilling efforts were largely targeted on IP geophysical targets. The drilling established the presence of rocks similar to the rocks hosting the Sleeper gold deposit and hydrothermally-altered, high-angle fault zones that contained low levels of gold-associated trace elements consistent with the regional structural and hydrothermal alteration fabric. Initial review of the gravity, air magnetic and IP geophysics together with Northgate's core drilling initially delineated the Quinn River Pediment target. NGE then extended groundwater sampling into the Pediment Target area to confirm and further delineate the extension of the anomalous groundwater chemistry signature. NGE is currently in discussion with potential JV partners intended to drill test the Quinn River Pediment target this summer.

HALF OF NEVADA REMAINS: **UNEXPLORED**

- ☞ Conventional exploration methods become challenged when the rocks are covered by sand & gravel.
- ☞ Groundwater interacts with large covered gold deposits and picks up a unique chemical scent.
- ☞ Nevada Exploration Inc. has developed an innovative groundwater sampling technology and has created a proprietary groundwater chemistry database that is thousands of samples ahead of any competition to systematically track down the remaining large covered gold deposits in Nevada.
- ☞ Exploration isn't mostly about luck anymore:

It's about the groundwater!

www.NevadaExploration.com

A Different Approach to Discovery

www.NevadaExploration.com