

A DIFFERENT APPROACH TO DISCOVERY

WWW.NEVADAEXPLORATION.COM

Grass Valley Designated
Property Update 08-12-13



 Nevada Exploration Inc

PIONEERING GROUNDWATER CHEMISTRY EXPLORATION IN NEVADA

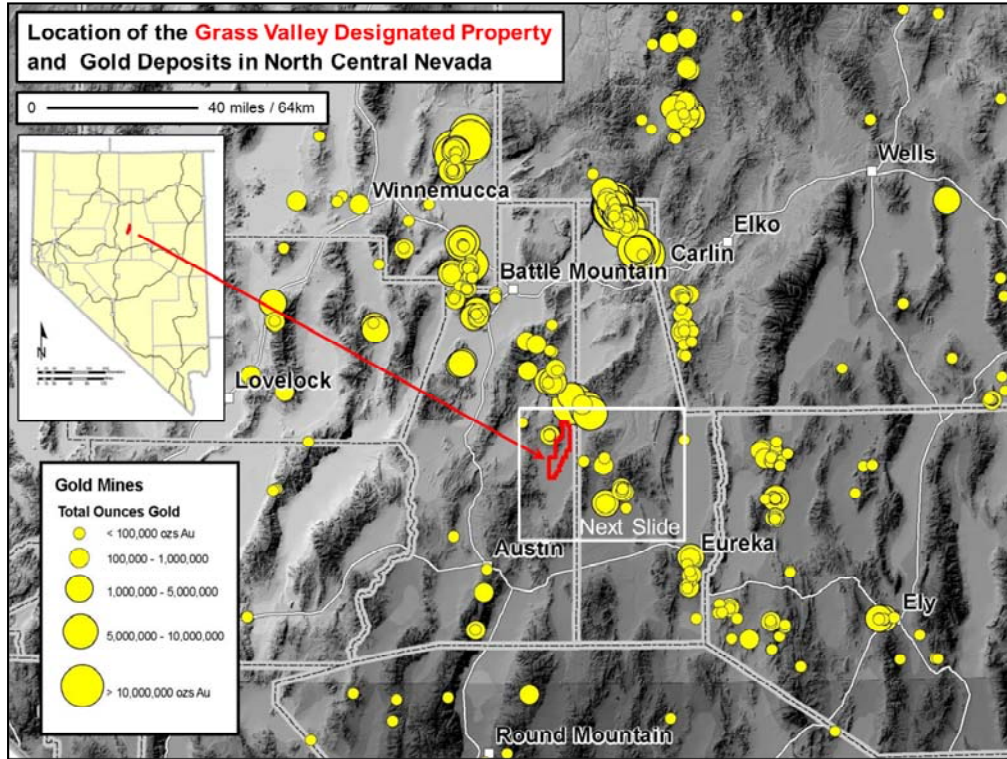
Cautionary Statement

This presentation contains certain "forward-looking statements" including, without limitation, expectations, beliefs, plans and objectives regarding the potential transactions and ventures discussed in this presentation. Among the important factors that could cause actual results to differ materially from those indicated by such forward-looking statements are the risks inherent in mineral exploration, the need to obtain additional financing, environmental permits, the availability of needed personnel and equipment for exploration and development, fluctuations in the price of minerals, and general economic conditions.

Nevada Exploration Inc., its subsidiaries or affiliated companies, disclaims all responsibility and accepts no liability (including negligence) for the consequences of any person acting, or NOT acting, on this information. This presentation is neither an offer nor the solicitation of an offer to sell or purchase any investment.

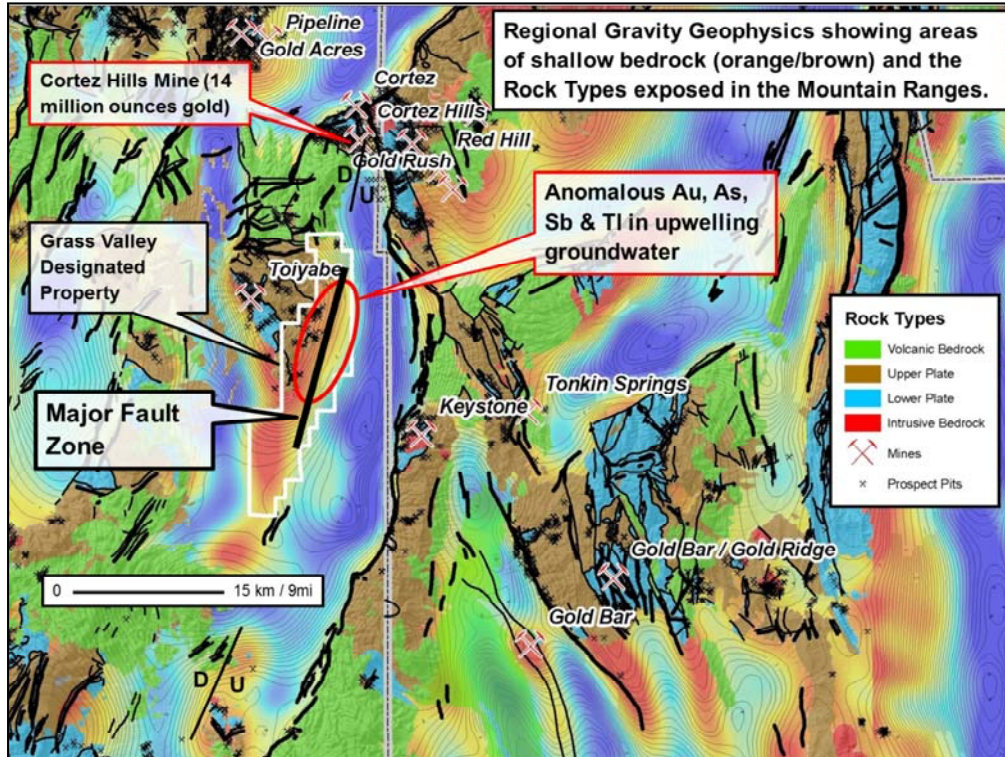
Thank You and Enjoy the Presentation!

The Management of Nevada Exploration Inc.

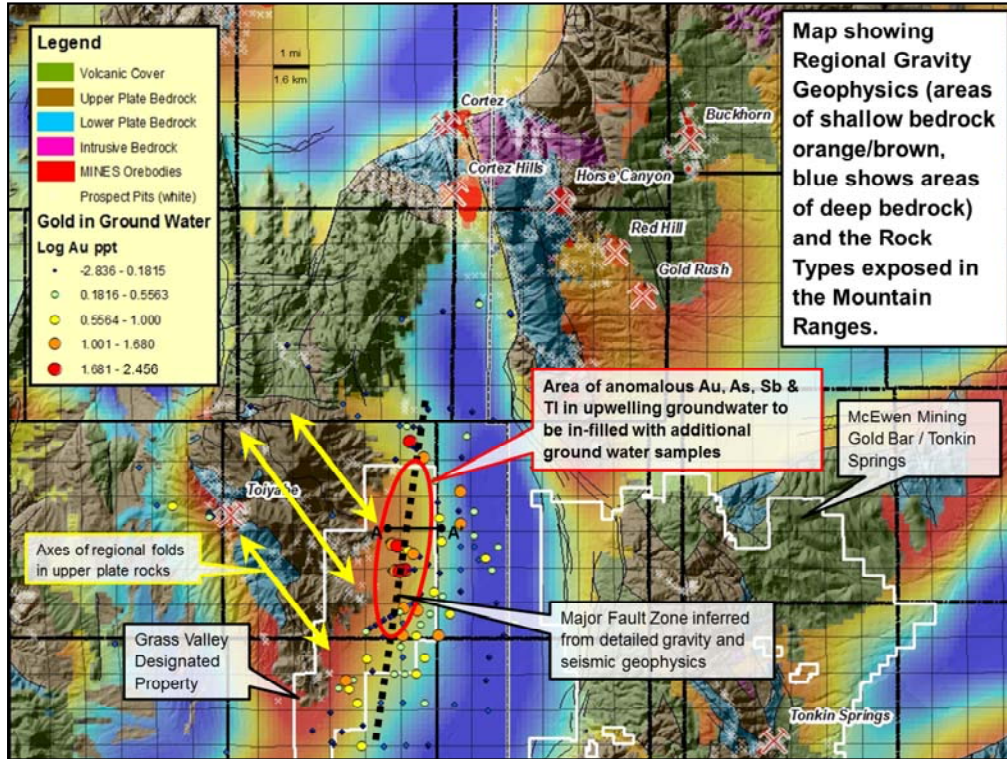


The Grass Valley Designated Property is located within the Eureka/Battle Mountain Trend of north-central Nevada.

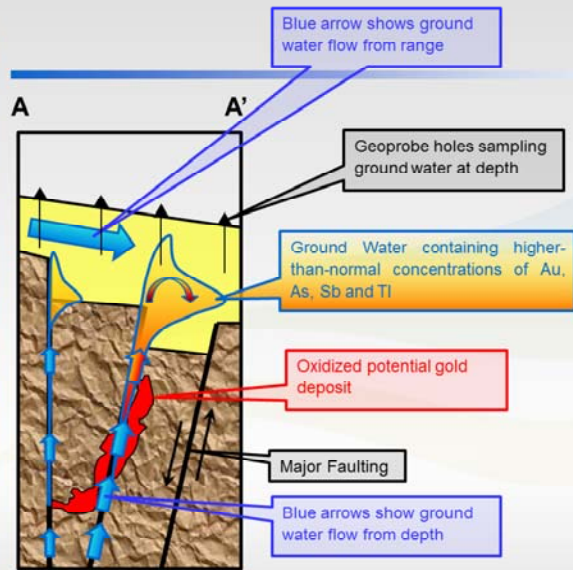
See www.NevadaExploration.com [Presentations area] for more information on the Genesis of Carlin-type gold deposits.



Regional and follow-up detailed gravity geophysics and seismic geophysics defines a previously unexplored, major fault zone covered by a thin veneer of sand & gravel along the east flank of the Toiyabe Range. The Cortez Hills gold mine (14 million ounces of gold) lies on one end of this major fault zone which controls upwelling groundwater 15 km (9 mi) to the south. The upwelling groundwater contains higher-than-normal concentrations of gold plus arsenic, antimony and thallium, which are also associated with the deeply oxidized (>3,000ft) Cortez Hills gold deposit. The Grass Valley Designated Property covers this major fault zone and its associated plume of upwelling anomalous groundwater.



The distribution of higher-than-normal concentrations of gold in ground water defines a large area of exploration interest that justifies additional in-fill ground water sampling.



Diagrammatic cross section illustrating conceptual flow of ground water and importance of anomalous ground water chemistry along faulted range front covered by sand & gravel to focusing exploration resources

For More Information visit:
www.NevadaExploration.com



HALF OF NEVADA REMAINS: **UNEXPLORED.**

VANCOUVER OFFICE

Suite 1500, 885 West Georgia Street
Vancouver, BC V6C 3E8
tel. 604 601 2006
fax 604 683 8125

RENO OFFICE

10 Greg Street, Suite 100
Sparks, Nevada 89431
tel. 775 359 7740
fax 775 359 7741

INVESTOR RELATIONS

info@nevadaexploration.com
Tel. 1 888 263 2110